

## RESEARCH TISSUE BANKS

These tissue banks have a system in place to register your consent to donate tissues after death. This list is not comprehensive and you should consult your local hospital about further possibilities.

**Leeds Tissue Bank.** Collects post-mortem tissue for research. Consent forms and instructions are available online at: [www.gift.leeds.ac.uk/index.html](http://www.gift.leeds.ac.uk/index.html) Or contact Leeds Tissue Bank, Room 2.11, Algernon Firth Building, Leeds General Infirmary, Leeds, LS1 3EX. Tel: 0113 392 6236. Email: [leedstissuebank@leedsth.nhs.uk](mailto:leedstissuebank@leedsth.nhs.uk)

**London Neurodegenerative Brain Bank.** Collects human brain tissue, both healthy and diseased, for research into neurological disorders. Donor information packs available. The Brain Bank, Department of Clinical Neuropathology, PO Box 76, Academic Neurosciences Centre, Institute of Psychiatry, London, SE5 9RS Tel: 020 7848 0290 Email: [brainbank@iop.kcl.ac.uk](mailto:brainbank@iop.kcl.ac.uk)

**Multiple Sclerosis Tissue Bank.** Brain tissue can be bequeathed by donors with or without MS. Tissue from healthy non-MS brains needed. Information packs, donor cards and newsletter available. The M.S. Tissue Bank, Division of Neuroscience & Psychological Medicine, Imperial College School of Medicine, Charing Cross Hospital, Fulham Palace Road, London, W6 8RF. Tel: 020 8846 7324 Email: [msbank@ic.ac.uk](mailto:msbank@ic.ac.uk) Emergency 24 hour donor line on 07693 300 300

**Queen Square Brain Bank for Neurological Disorders.** Collects post mortem brain for research into neurological disorders, including Parkinson's disease, dementia and others. Tissues are supplied to researchers worldwide. Donation consent form available from: Susan Stoneham Administrator, Queen Square Brain Bank, Institute of Neurology, 1 Wakefield Street, London WC1N 1PJ. Tel: 020 7837 8370 Email: [s.stoneham@ion.ucl.ac.uk](mailto:s.stoneham@ion.ucl.ac.uk)

**Parkinson's Disease Society Tissue Bank.** Accepts donations of brain tissue from patients with or without Parkinson's disease and other movement disorders. Tissue from healthy 'control' individuals is especially needed. Donations accepted from across the UK. Donor packs and cards available from PD Tissue Bank, Division of Neuroscience & Psychological Medicine, Imperial College Faculty of Medicine, Charing Cross Campus, Fulham Palace Road, London W6 8RF. Tel: 020 8383 4917 Email: [pdbank@ic.ac.uk](mailto:pdbank@ic.ac.uk) Emergency bleep number 07693 554466

**Nottingham Tissue Bank.** Collects brain and some other tissues for internal research. Nottingham Brain Bank, Dept of Histopathology, Queens Medical Centre, University Hospital NHS Trust, Nottingham, NG7 2UH. Tel: 0115 970 9726

**Sheffield Tissue Bank.** Collects brain and spinal cord tissue from both healthy individuals and patients with brain disorders. Academic Neurology Unit, Division of Genomic Medicine, E Floor, Medical school, University of Sheffield, Beech Hill Road, Sheffield S10 2RX. Tel: 0114 271 3579

**Newcastle Brain Tissue Resource.** Collects post mortem brain from healthy older people and patients with neurological disease. No registration system yet in place and donations needed within 24 to 72 hours of death. Newcastle Brain Tissue Resource MRC Building, Newcastle General Hospital, Newcastle upon Tyne, NE4 6BE. Tel: 0191 444 4412

**Bristol University.** Bodies can be bequeathed specifically for research purposes or for training of student doctors. Bequest Office, Dept of Anatomy, University of Bristol, Southwell Street, Bristol BS2 8EJ. Tel: 0117 928 7415

**South West Brain Bank.** Collects brain tissue from dementia and non-dementia brains. Donations possible. Dept of Care of the Elderly, John James Building, Frenchay Hospital, Bristol BS16 1LE. Tel: 0117 970 1212 ext 2270

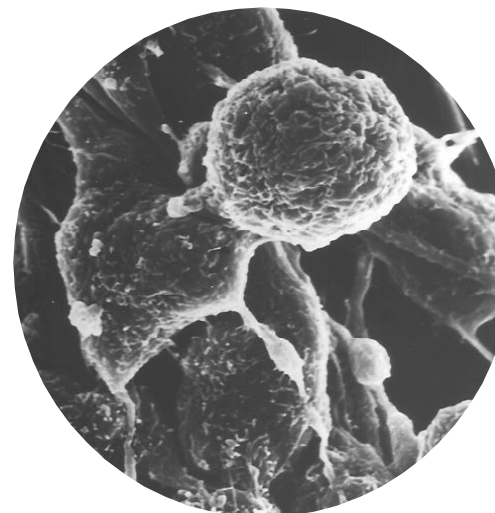
### Medical Training

You can leave your body for the teaching of anatomy to medical students by contacting Human Tissue Authority, Finlaison House, 15-17 Furnival Street, London EC4 1AB Tel: 020 7972 4551. A brochure and consent form can be downloaded at their website: [www.hta.gov.uk](http://www.hta.gov.uk)



# Focus on

## Human Tissue in Research



- Why human tissue is vital for medical research
- How human tissue can replace animal tests
- What you can do to help

*This leaflet is produced by Focus on Alternatives, a collaboration of British non-profit groups that fund and promote methods to replace animals in research, education and testing. For more information about our activities please visit our website at [www.focusonalternatives.org.uk](http://www.focusonalternatives.org.uk) or contact us at [info@focusonalternatives.org.uk](mailto:info@focusonalternatives.org.uk)*

## HUMAN TISSUE IN RESEARCH

### Vital medical research

Our bodies are made up of many different types of cells and tissues. Scientists study human cells and tissues in the laboratory to understand what goes wrong in disease and to discover new cures or treatments. Human tissue is vital for medical research. For example, studies of donated brain tissue have considerably increased our understanding of serious illnesses such as multiple sclerosis, Parkinson's disease and Alzheimer's disease.

### Replacing animal experiments

As well as enabling medical progress, research with human tissues can help to replace animal experiments. Human tissue is ideal for medical research, as animal tissues can respond differently to human ones (species differences) and may produce misleading results. Using human tissue avoids causing animal suffering and improves the quality of medical research.

For example, human cartilage tissue has been used to study rheumatism, as an alternative to inducing inflamed painful joints in rabbits. Pieces of human tumour can be used in cancer research, instead of experiments on rats and mice implanted with tumours. Human liver and kidney tissue is used for investigating potentially harmful effects of new drugs and chemicals, instead of poisoning tests on dogs, monkeys and rodents.



In Britain it is estimated that hundreds of thousands of animals are bred and killed each year solely to provide tissues for research. Human cell and tissue culture have a vital role to play in replacing animal experiments in medical research, drug discovery, vaccine production and diagnostic tests.

### Where does the human tissue come from?

Potential sources of human tissue include samples taken from patients for diagnosis (biopsies), or removed as 'waste' during surgical operations (e.g. cosmetic surgery or tumour removal), placentas or 'afterbirth', or tissues obtained after death. UK legislation to ensure the ethical supply of human tissue requires researchers to obtain the permission of the patient before using tissues for research.

## HOW YOU CAN HELP

Human tissues can help to replace animal experiments in medical research. It cannot be guaranteed that your tissues will be used to replace animals, but studies on human tissues are vital for medical progress. You can help by actively seeking to donate tissues in the following ways:

### 1. Leave your body to research

A few hospitals and research institutes have their own tissue banks where you can register your desire to leave your body or organs for research after death. Brain banks, for research into serious brain disorders, have a shortage of 'normal' disease-free brains donated to them. It is important that you register your consent with them in writing. See the list overleaf and ask at your local hospital.

### 2. Seek to donate tissues

If you are about to undergo a surgical operation, or have a biopsy taken, ask if the tissues to be taken from you might be used for research. Some hospitals have their own internal tissue banking facilities that collect tissues for local research use.

### 3. Become an organ donor

Register as an organ donor and carry an organ donor card, and in the event of your death your organs will be considered for transplantation first. If they prove unsuitable for transplantation your tissues can be used in research. Register online at [www.uktransplant.org.uk](http://www.uktransplant.org.uk) or Telephone 0845 6060 400.

### 4. Put your consent in writing

The Human Tissue Act 2004 recommends bequest of a body be made by the donor in writing and signed in the presence of at least one witness. Discuss the issue with your next-of-kin and inform them of your wishes in advance. It can be of comfort for the bereaved to know that they are carrying out a loved-one's final request.

### 5. Don't leave it too late

Investigate the possibilities now. Tissues deteriorate rapidly after death and quickly become unusable, usually within a matter of hours. You therefore need to explore the possibilities in advance, and register your willingness to donate with a local tissue bank now.